



Telford & Wrekin
Co-operative Council

Protect, care and invest
to create a better borough

TravelTelford



Active Travel Scheme

Silkin Way Crossing Points

Consultation Document



Background

As part of our ongoing plan to improve provisions for pedestrians and cycles across the borough, we have reviewed the feasibility of improving provisions on the Silkin Way.

The sites (Stafford Road, Station Hill and Canongate) have been identified as suitable locations for improved crossing points routes to improve the safety of cyclists, pedestrians and vehicle users.

A review of the Silkin Way, in the Oakengates area (approximately 1.2km) has been undertaken to assist in the consideration of engineering measures that would best support a scheme to further improve active travel in the area. All items discussed in this note will be discussed between the Highways Team, Local Members and the Parish Council.

The review area of the Silkin Way is shown in Figure 1.0

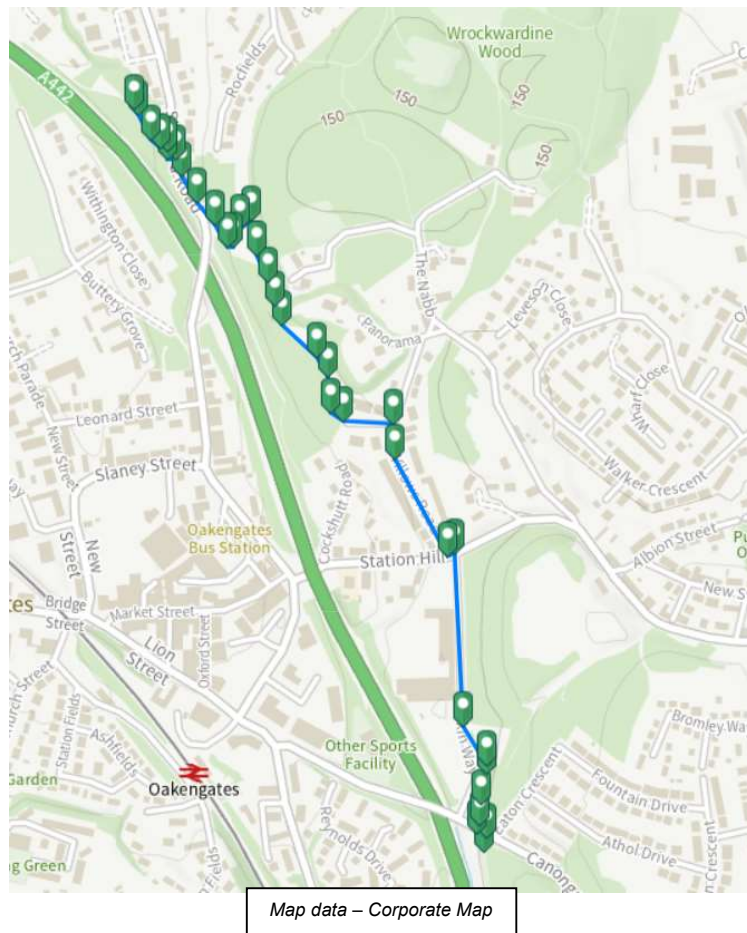


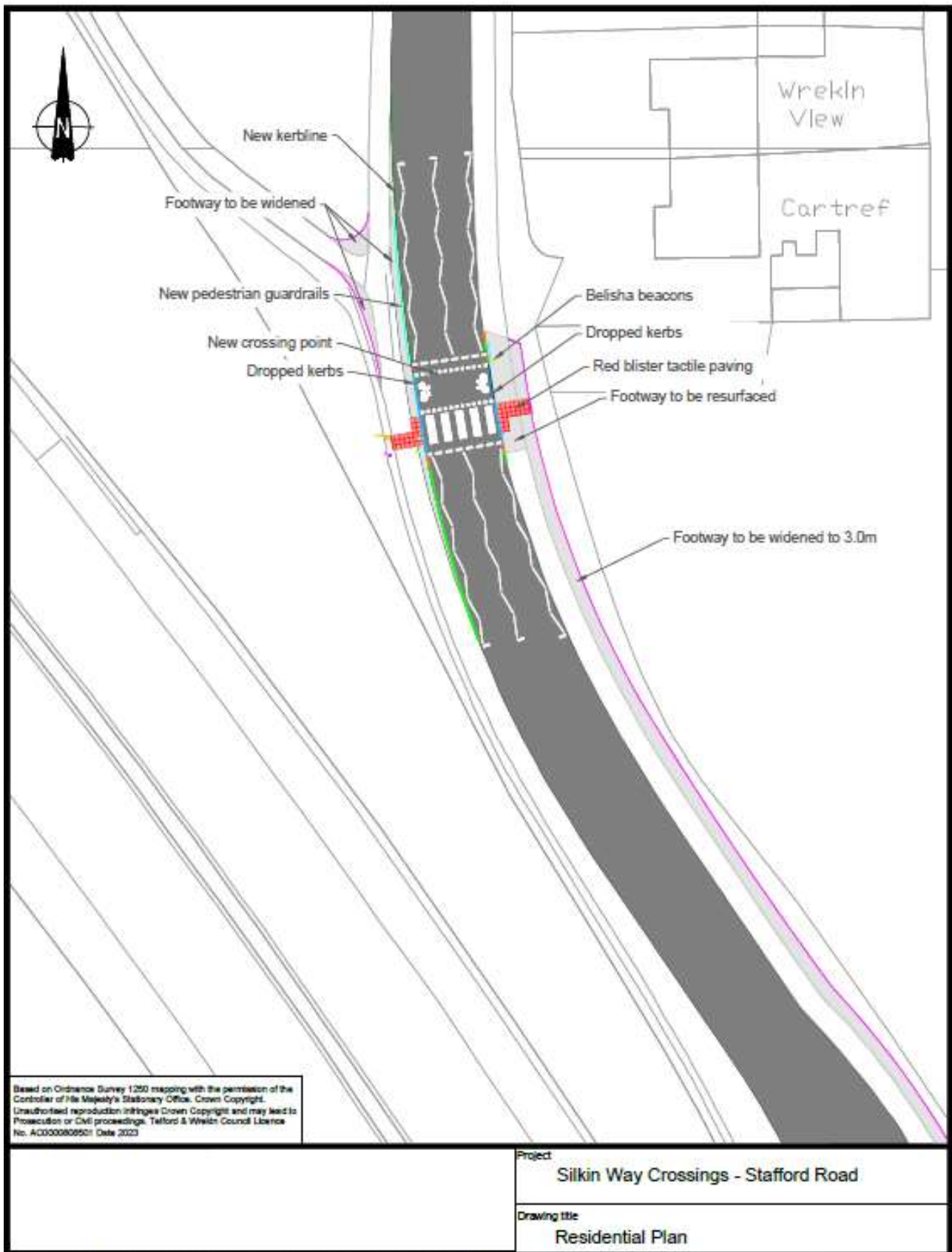
Figure 1.0 Review Area – Silkin Way (Highlighted Blue)

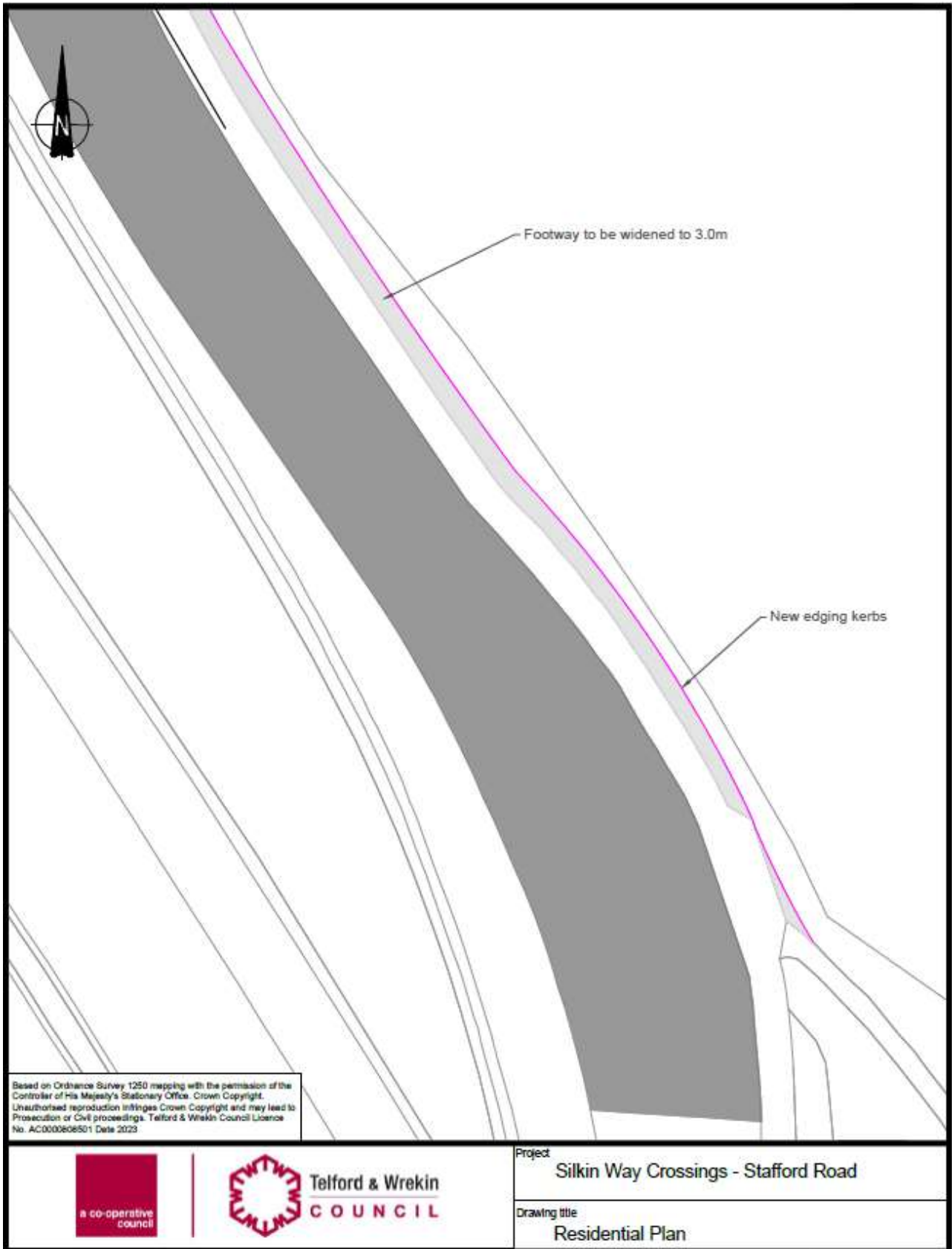
What changes are proposed?

The feasibility of creating designated crossing points for cycles and pedestrians has been investigated and the following designs produced. To enable the creation of the crossing points to the current guidelines and legislation, the footway along Stafford Road will need to be increased to 3.0m in width to facilitate the safe crossing of cycles and pedestrians.

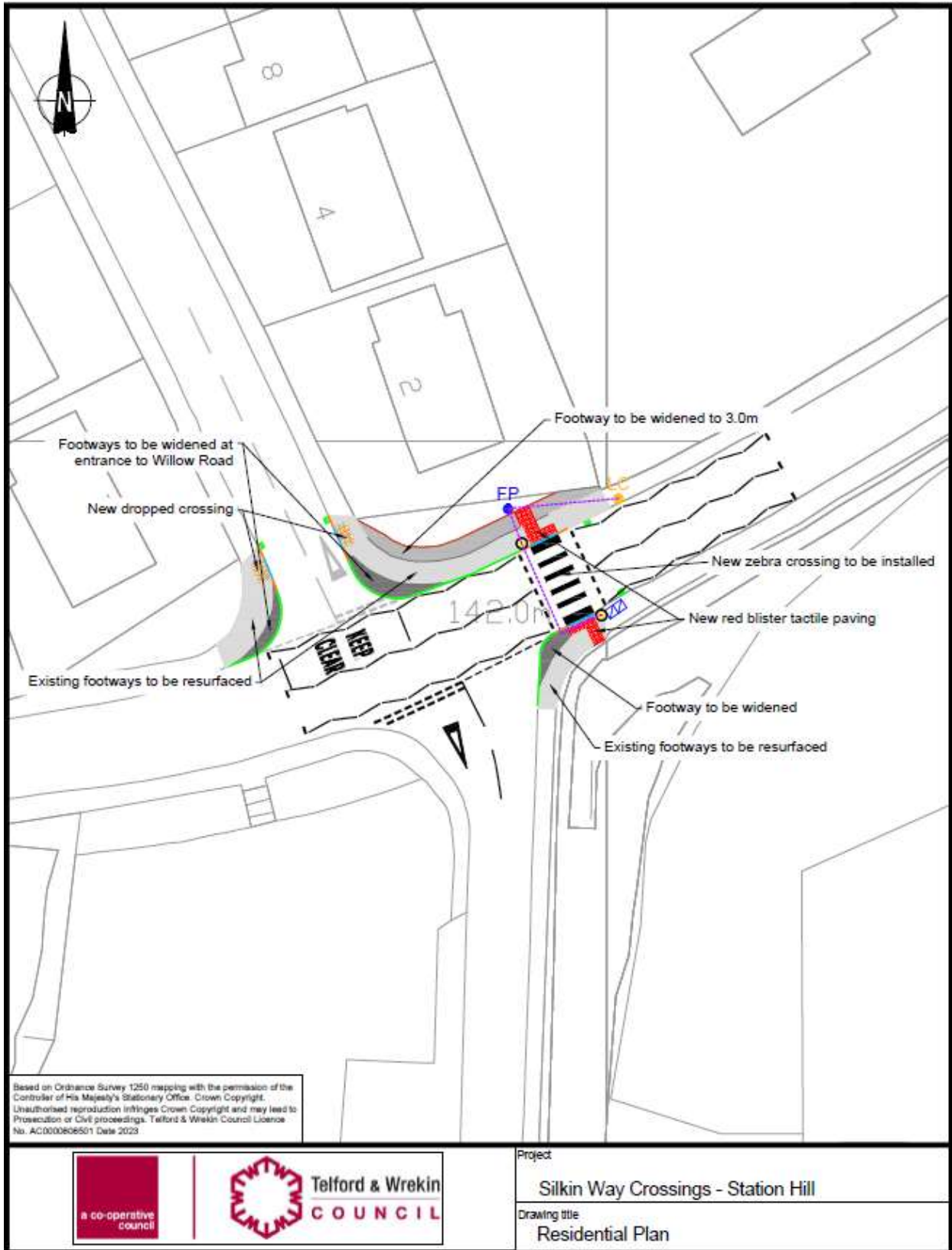
This scheme will follow on from previous improvements to the Silkin Way route and improve the continuity of the route around the Oakengates area. It is hoped that the improved provisions will encourage more frequent use of the Silkin Way by cyclists which will help with alleviating traffic issues in the area.

Scheme Proposal – New Crossing Point on Stafford Road

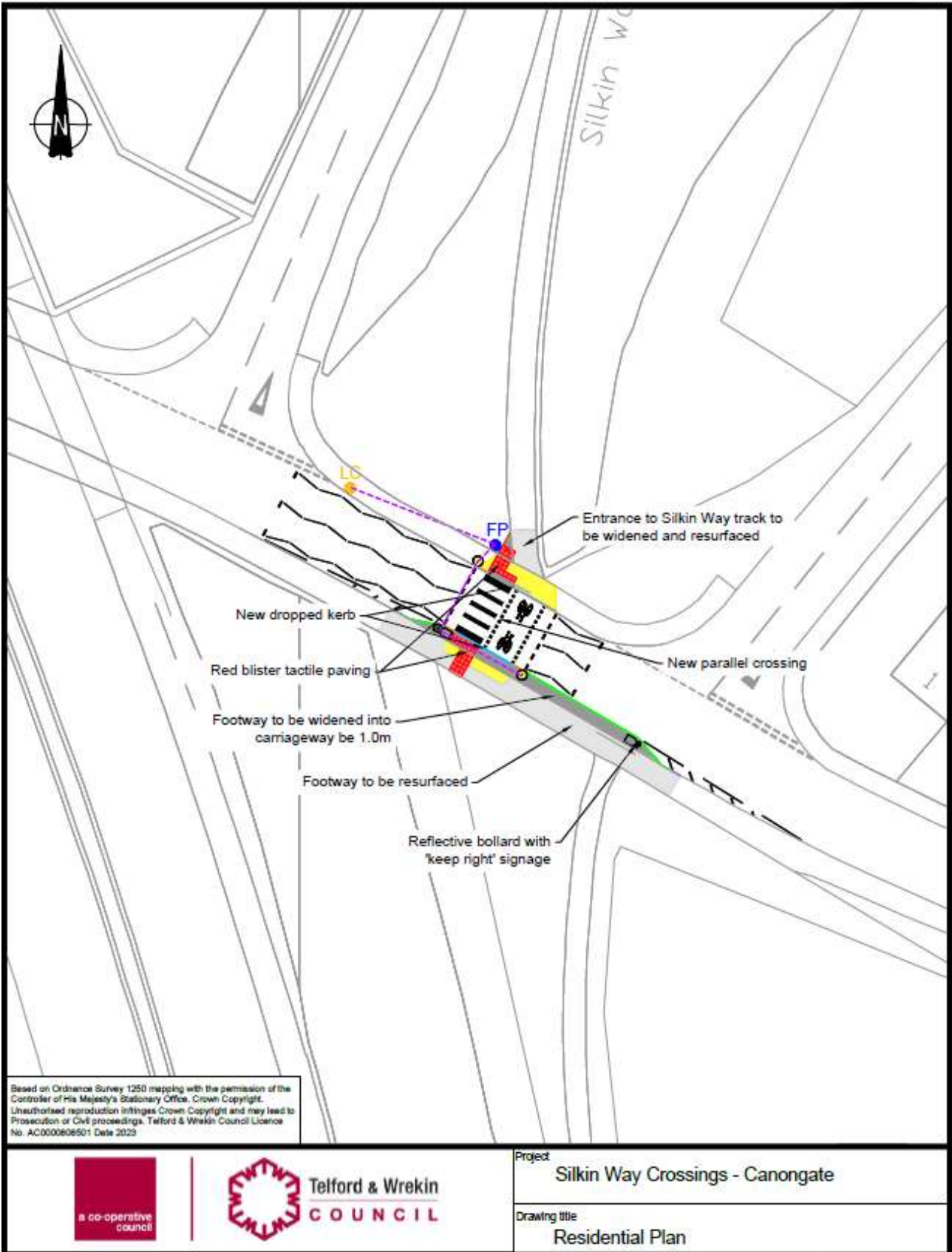




Scheme Proposal – New Crossing Point on Station Hill



Scheme Proposal – New Crossing Point on Canongate



What will happen next?

In reviewing this document, the scheme is out for public consultation. This allows residents & businesses in the area to provide feedback and comments on the proposal before a final decision on whether to deliver the scheme is made. For the opportunity to provide your feedback, please visit:

https://www.telford.gov.uk/info/20461/travel_telford/6710/silkin_way_pedestrian_crossings_2024 and complete the 'Have Your Say' section alternatively, please email projectsteam@telford.gov.uk.

The outcomes of discussions between the Highways & Active Travel Team, Local Members and the Parish Council will be reviewed in detail and a decision will be made based on how best to proceed. Should agreement be reached, the scheme will be taken forward.

It is considered that the public consultation stage will be a direct test of public support for the option presented before proceeding to detailed design. The outcome of the public consultation will be reviewed in detail and a decision will be made based on the content of the comments received.

Factors that will be taken into account will include, but not necessarily be limited to:

- Road safety
- Level of support
- Detail of any objections

As a local resident you may have a view as to the best layout that you would like to see however there are a number of hidden factors that influence this such as the location of hidden underground services for example gas mains, electricity and water pipes and who the land owner is, as not all the land falls under the councils ownership. Taking all this into account all of these factors would have been explored before finalising the design included above.

What will happen if the proposals are not supported?

The content of any objection will be considered and responded to accordingly. Should the proposals receive a high level of objection, it is unlikely that the proposal will be taken forward and an alternative option may be considered if possible. The format of any alternative proposal would be based on the content of any objection. Any alternative scheme would then undergo the same process (investigation works, detailed design, public consultation and contractor engagement) before a decision is made to deliver the scheme.