



Telford & Wrekin
Co-operative Council

Protect, care and invest
to create a better borough

Telford and Wrekin Joint Strategic Needs Assessment (JSNA) **Population Headlines**

January 2024

Telford and Wrekin Joint Strategic Needs Assessment (JSNA) Population Headlines

Document Governance

Title	Telford and Wrekin Joint Strategic Needs Assessment (JSNA) Population Headlines
Purpose/scope	To provide a summary of headline population data for Telford and Wrekin.
Report prepared by	Helen Potter, Insight Manager and Damion Clayton, Insight Partner, Telford & Wrekin Council
Date of report	January 2024
Version	1.0
Disclaimer	Telford & Wrekin Council, while believing the information in this publication to be correct, does not guarantee its accuracy nor does the Council accept any liability for any direct or indirect loss or damage or other consequences, however arising, from the use of such information supplied. For our full Terms and Disclaimer, please see http://www.telford.gov.uk/terms

Contents

Introduction	3
Population Growth in Telford and Wrekin.....	4
Population Characteristics.....	6
Population Health and Wider Determinants of Health	9
Life Expectancy	11
Mortality.....	13
Starting Well.....	15
Living Well.....	18
Ageing Well.....	20
Version Control.....	22

Introduction

This document brings together headlines about the health and wellbeing needs of the population of Telford and Wrekin, providing a summary of the main Joint Strategic Needs Assessment (JSNA) products and links to other reports which contain more detail.

The borough of Telford and Wrekin is located in the West Midlands region. The borough is a distinctive blend of urban and rural areas, with green open spaces alongside contemporary housing developments and traditional market towns.

The population of Telford and Wrekin continues to grow at above national rates. The population is also ageing at a faster rate than that seen nationally, with the growth seen in the number of over-65 residents between 2011 and 2021 one of the biggest in England. As the borough grows, it is also becoming increasingly diverse, particularly amongst our younger residents.

Some neighbourhoods and communities in the Borough are among the most deprived areas nationally, with other communities amongst the more affluent in England. There are notable inequalities in the borough which are affecting outcomes for residents, and overall health in the borough is below average.

Alongside the headlines within this document, links to more detailed reports and interactive dashboards that are available to provide additional detail. These can also be found on the [Telford and Wrekin Insight](#) website. If you have any questions, please contact insight.team@telford.gov.uk

The information in this summary is a snapshot as at January 2024. This summary will be updated annually to reflect the key messages about the borough from all JSNA products and projects – all data is referenced to show the dates it relates to and where the source data can be found. More recent data may have been published via the source than is included in this summary. Please contact the Insight Team with any questions.

Population Growth in Telford and Wrekin

The population of the Borough continues to grow at above national rates. As the population grows, it has continued to change, with the population becoming more diverse and ageing:

- The estimated the population of Telford & Wrekin is 188,871 (*source: ONS mid-year population estimates 2022*), an increase of 3,014 since mid-year 2021. The growth of the population between 2021 and 2022 (1.6%) continues to be at a greater rate than England (1.0%) and the West Midlands (1.1%).
- The borough's population increased by 19,000 people in the 10 years between the 2011 Census and 2021 Census, an increase of 11.4%. This was the highest of all West Midlands upper tier local authorities and the 21st highest of all 151 upper tier local authorities in England (*source: ONS Census data*).
- The borough saw one of the largest increases in population aged 65 plus in England between the 2011 and 2021 Census, with an increase of 35.7% (England 20.1%) – the highest increase of all West Midlands upper tier local authorities and the second highest of all 151 upper tier authorities in England (*source: ONS Census data*).
- The largest component of population growth in the borough is internal migration, accounting for 63% of population change between mid-2021 and mid-2022.
- The 2022 mid-year population estimates for the borough showed:
 - 9% of the population change in the borough between mid-2021 and mid-2022 was due to natural change (births minus deaths). Since mid-2012 natural change has become less of a driver in population change as the gap between the number of births and deaths in the borough has closed.
 - In the year to mid-2022 there were 1,801 deaths and 2,060 births in the borough. This gave a natural change of 259 people. This was the lowest figure for natural change recorded between mid-2012 and mid-2022 and compares with a high point in mid-2012 when there were 938 more births than deaths.
 - 63% of the population change in the borough between mid-2021 and mid-2022 was attributable to net internal movement from other parts of the UK.
 - In the year to mid-2022 it is estimated that 9,978 people moved to Telford and Wrekin from other parts of the UK whilst 8,077 moved out of the borough to other parts of the UK. This gave a net internal movement of 1,901 people. This was an increase of 265 people (16.2%) from mid-2021 and was the largest number of net internal moves recorded between 2012 and 2022. It also represents a noticeable change from mid-2011 and mid-2012 when more people moved out of the borough to other parts of the UK than arrived.
 - An estimated 1,693 people arrived in the borough from outside the UK, with 869 emigrating, giving a net international migration to Telford and Wrekin for mid-2022 of 824 people.
 - This represented an increase in net international migration of 318.3% (627 people) from mid-2021. This was more than twice the rate of increase in net international migration for England (151.8%) and was greater than the West Midlands average (215.4%).

- The median age of the borough's population in mid-2022 was estimated to be 39.9 years. This compares with 40.5 years for England and 40.2 years for the West Midlands. Since mid-2012 the median age of the borough's population has increased by 0.9 years. (*source: ONS Population Estimates 2022*).

For more information, see the [‘JSNA: Population and Life Expectancy’](#) dashboard which includes more detail about the measures above and, where available, how rates vary across different communities in the borough.

Population Characteristics

The 2021 Census showed the borough becoming notably more diverse in the ten years since the previous Census in 2011:

Migration:

- 11.4% of usual residents of Telford and Wrekin in March 2021 (21,110 people) were born outside of the UK compared to 7.3% of usual residents (12,137 people) in 2011. This was an increase of 8,973 people (73.9%) from 2011.
- Poland was the most common country of birth outside of the UK for borough residents in 2021, with 1.9% of borough residents (3,481 people) listing Poland as their country of birth. India was the second most common country of birth (1.1% of residents), followed by Ghana (1.1% of residents)
- **For more information, see the [‘Census 2021: Demography and Migration’ dashboard](#).**

Ethnicity:

- In 2021, 88.2% (163,638) of usual borough residents identified their ethnic group within the high-level “White” category. This compared to 81.0% for England and was a decrease in from 92.7% (154,415) in the 2011 Census.
- As part of the “White” ethnic group, 83.0% (153,936) of the total population of the borough identified their ethnic group as “English, Welsh, Scottish, Northern Irish or British”. This compares to 73.5% for England and was a decrease from 89.5% (149,096) in 2011.
- The next most common high-level ethnic group was “Asian, Asian British or Asian Welsh” accounting for 5.4% (10,067) of the borough population compared to 9.6% for England.
- **For more information, see the [‘Census 2021: Ethnicity, Identity, Language and Religion’ dashboard](#).**

National Identity

- In 2021, 92.8% (172,114) of usual borough residents identified with at least one UK national identity (English, Welsh, Scottish, Northern Irish, British and Cornish) compared with 90.0% for England. This was a decrease in Telford and Wrekin from 95.8% (159,698) in the 2011 Census.
- Those selecting a non-UK identity only, accounted for 7.3% (13,505) of the borough population in 2021 compared to 10.1% for England. This was an increase locally from 4.2% (6,943) of the population in 2011.
- Among those who described a non-UK national identity, the most common response was those describing “Polish” only as their identity. This accounted for 1.6% (2,972) of borough residents compared to 1.0% for England. “Romanian” only was the second most commonly reported non-UK national identity in the borough. This accounted for 0.9% (1,701) of borough residents compared to 0.8% for England.

- **For more information, see the [‘Census 2021: Ethnicity, Identity, Language and Religion’ dashboard](#).**

Language:

- In 2021, 93.4% (167,409) of usual borough residents, aged three years and over, had English as a main language. This compared to 90.8% for England and was a decrease locally from 95.9% (153,163) of residents in 2011.
- In 2021, a further 5.3% (9,452) of borough residents could speak English well or very well but did not speak it as their main language.
- The most common main languages in the borough, other than English were: Polish (1.7%, 3,089), Romanian (1.0%, 1,756) and Panjabi (0.6%, 1,075).
- **For more information, see the [‘Census 2021: Ethnicity, Identity, Language and Religion’ dashboard](#).**

Religion:

- As with England, for the first time in a census, less than half of borough residents (47.6%, 88,275 people) described themselves as “Christian”.
- The main driver for the change was the proportion of residents who indicated that they had “No religion”. In 2021, 40.9% (75,964) of borough residents responded that they had “No religion”. This was greater than for England (36.7%).
- “Muslim” was the second most common religion in the borough, increasing to 2.7% (5,043) of residents in 2021 from 1.8% (3,019) of residents in 2011.
- **For more information, see the [‘Census 2021: Ethnicity, Identity, Language and Religion’ dashboard](#).**

Sexual Orientation

- The census question on sexual orientation was a voluntary question asked for the first time in Census 2021. 92.9% (138,176) of usual borough residents aged 16 and over answered the question.
- 134,069 (90.2% of usual borough residents aged 16 and over) identified as straight or heterosexual; 1,974 (1.3%) described themselves as gay or lesbian; 1,726 (1.2%) described themselves as bisexual; 407 (0.3%) selected “Other sexual orientation”.
- The overall proportion of borough residents who identified with an LGB+ orientation was 2.8% (4,107) which compares with 2.6% for the West Midlands and 3.2% for England.
- **For more information, see the [‘Census 2021: Sexual Orientation and Gender’ dashboard](#).**

Gender Identity

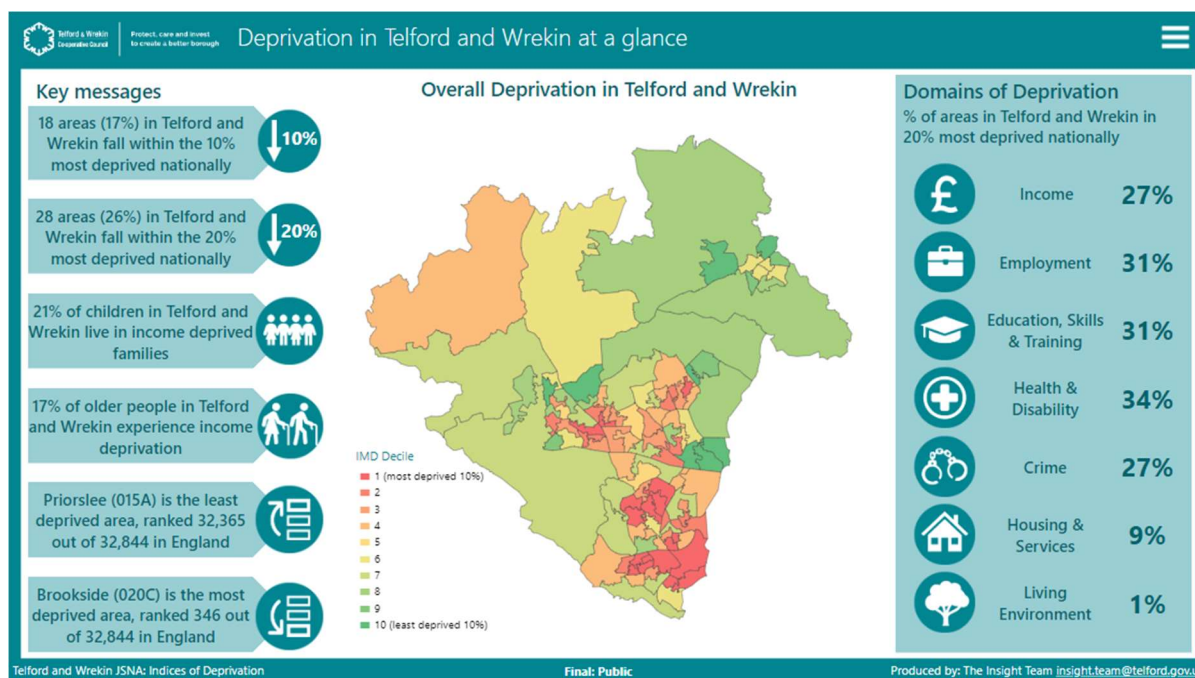
- The census question on gender identity was a voluntary question asked for the first time in Census 2021 of those aged 16 years and over. The question asked, “Is the

gender you identify with the same as your sex registered at birth?”. 94.3% (140,137) of usual borough residents aged 16 and over answered the question.

- A total of 139,411 (93.8% of usual borough residents aged 16 and over) indicated that their gender identity was the same as their sex registered at birth.
- A total of 726 (0.5%) answered “No” indicating that their gender identity was different from their sex registered at birth. Within this group: 361 (0.2%) answered “No” but did not provide a write-in response; 149 (0.1%) identified as a trans man; 118 (0.1%) identified as a trans woman; 58 (0.04%) identified as non-binary; 40 (0.03%) wrote in a different gender identity.
- **For more information, see the [‘Census 2021: Sexual Orientation and Gender’ dashboard](#).**

For more Census 2021 information, including how these rates vary across different communities in our borough and across different age groups, please contact the Insight Team.

Population Health and Wider Determinants of Health



Telford and Wrekin is a place of socio-economic contrasts. Parts of the borough are amongst the most deprived in England, with deprivation rates comparable to inner cities, whilst other areas are amongst the least deprived in England. There are notable inequalities in the borough which are affecting outcomes for residents, and overall health in the borough is below average.

- Around 15.7% of the population (29,100 people, Census 2021) live in areas ranked in the 10% most deprived in England for overall deprivation. Around 24.9% of the population of Telford & Wrekin live in areas in the 20% most deprived nationally, around 45,100 people. (source: 2019 Index of Multiple Deprivation). **For more information, including how these rates vary for different communities in the borough, see the '[JSNA: Deprivation](#)' dashboard.**
- Around 23.9% of children live in relative low-income families, around 8,814 children and a higher proportion than the England rate (19.9%) (source: PHE Fingertips 2021/22)
- In the 2021 Census, 44.2% of the age standardised population (85,723 people) reported very good health in 2021. This was lower than the proportion of the population for England as a whole (47.5%) (source: ONS Census 2021)
- 1 in 5 of the borough's age standardised population (20.5%, 36,526 people) were disabled in 2021. This was greater than the proportion of the population for England (17.7%) (Source: ONS Census 2021) **For more information see the '[Census 2021: Health, Disability and Unpaid Care](#)' dashboard.**
- 1 in 10 of the borough's age standardised population (10.6%, 18,026 people) reported that they were providing unpaid care in 2021. This was greater than the proportion for England (8.9%) and the West Midlands (9.6%) and was the 10th highest proportion of all upper tier local authorities England. 3.5% of the borough's

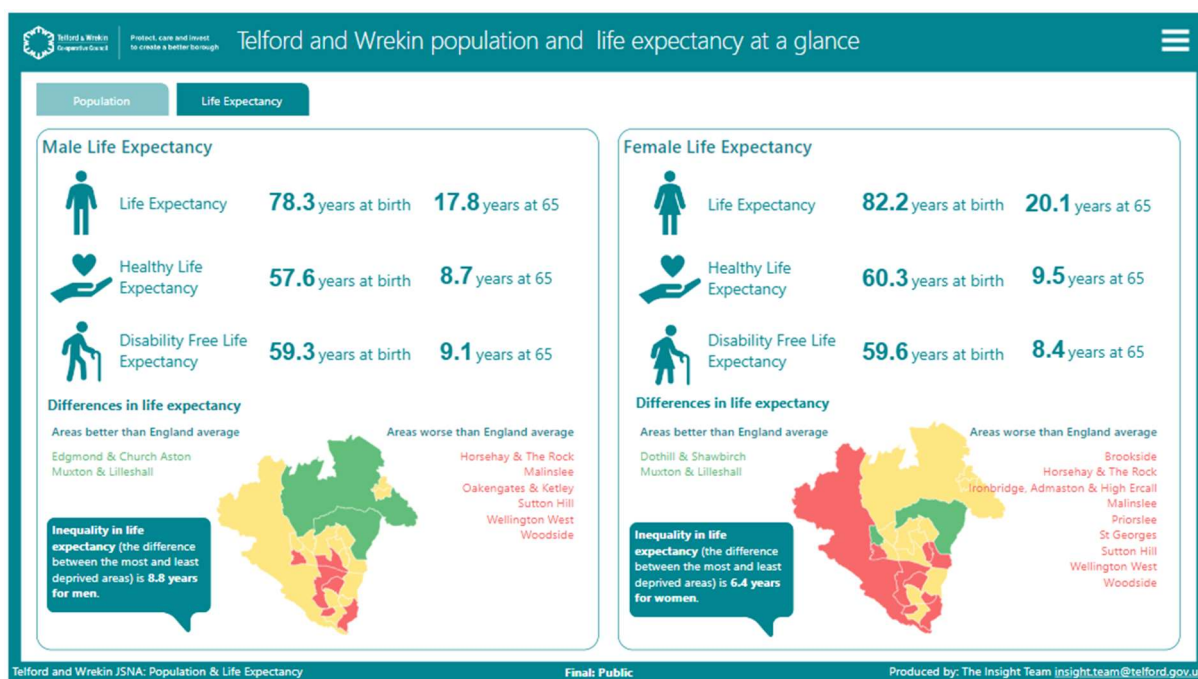
age standardised population (5,899 people) were doing so for more than 50 hours per week. (Source: ONS Census 2021). **For more information see the [‘Census 2021: Health, Disability and Unpaid Care’ dashboard](#).**

- The borough has lower rates of people claiming unemployment benefits than regionally or nationally (Telford and Wrekin 3.6%, West Midlands 4.8%, England 3.8%) (source: NOMIS claimant count Feb 2023)
- The largest employment sectors in the borough are construction (730 businesses) and retail (700 businesses) (source: NOMIS UK Business Count 2022)
- The 2021 Census showed that there was an increase in the proportion of households who rented their accommodation privately to 21.2% (16,197) in 2021 from 15.0% (9,979) in 2011. This meant that the proportion of privately rented homes in the borough was greater than England (20.5%). (Source: ONS Census 2021). **For more information see the [‘Census 2021: Housing’ dashboard](#).**
- The vast majority of households in the borough reported that they had central heating in 2021 (99.1%, 75,790). However, 0.9% (721) of households had no central heating. (Source: ONS Census 2021). **For more information see the [‘Census 2021: Housing’ dashboard](#).**
- There was a decrease in the proportion of borough households did not have a car or van available to them to 18.7% (14,326) in 2021 from 20.6%, (13,748) in 2011. (Source: ONS Census 2021). **For more information see the [‘Census 2021: Housing’ dashboard](#).**
- In 2021, 8,066 people in Telford and Wrekin reported that they had previously served in the UK armed forces. This was 5.4% of usual residents aged 16 and over and compares to 3.8% for England. (Source: ONS Census 2021). **For more information, see the [‘Census 2021: Armed Forces’ dashboard](#).**

For more information, including on how these rates vary across different communities in the borough and for different ages of our population, please contact the Insight Team.

Life Expectancy

Life expectancy and healthy life expectancy are recognised measures of life experiences and overall population health.



Life Expectancy at birth for men:

- Average life expectancy at birth for men in the borough was 78.3 years in 2021, compared to 78.7 years for England. Compared with women in the borough, men live 4.5 years fewer on average. The trend over time showed male life expectancy increasing between 2001-03 and 2012-14, however since that point the increase has stalled.
- Healthy life expectancy for men was 57.6 years in 2018-20, worse than the England average (63.1) and 2.7 years fewer than women in the borough. The trend in healthy life expectancy has worsened by 4.2 years from a peak of 61.8 years in 2014-16. This has mirrored a decline in disability free life expectancy which was 59.3 years in 2018-20 and was worse than the England average (62.4).
- Inequality in male life expectancy was 8.8 years in 2018-20. Although this has reduced in recent years it remains 2.1 years greater than 2012-14 when it was 6.7 years.

Life Expectancy at birth for women:

- Average life expectancy at birth for women in Telford and Wrekin was 82.2 years in 2021, compared to 82.8 years for England. Compared with men in the borough, women live 4.5 years longer on average. The trend over time showed life expectancy for women increasing between 2001-03 and 2014-16, however since that point the increase has stalled.
- Healthy life expectancy for women was 60.3 years in 2018-20, worse than the England average (63.9) but 2.7 years longer than men in the borough. Healthy life

expectancy in 2018-20 was 1.4 years greater than in 2009-11 but had decline by 2.2 years from 2017-19. This is reflected in a decline in disability free life expectancy from 62.8 years in 2017-19 to 59.6 years in 2018-20 which was similar to the England average (59.9).

- Inequality in female life expectancy was 6.4 years in 2018-20. Although this has reduced from 8.7 years in 2016-18 it remains 2.6 years greater than its lowest point in 2010-12.

Life expectancy at aged 65 for men:

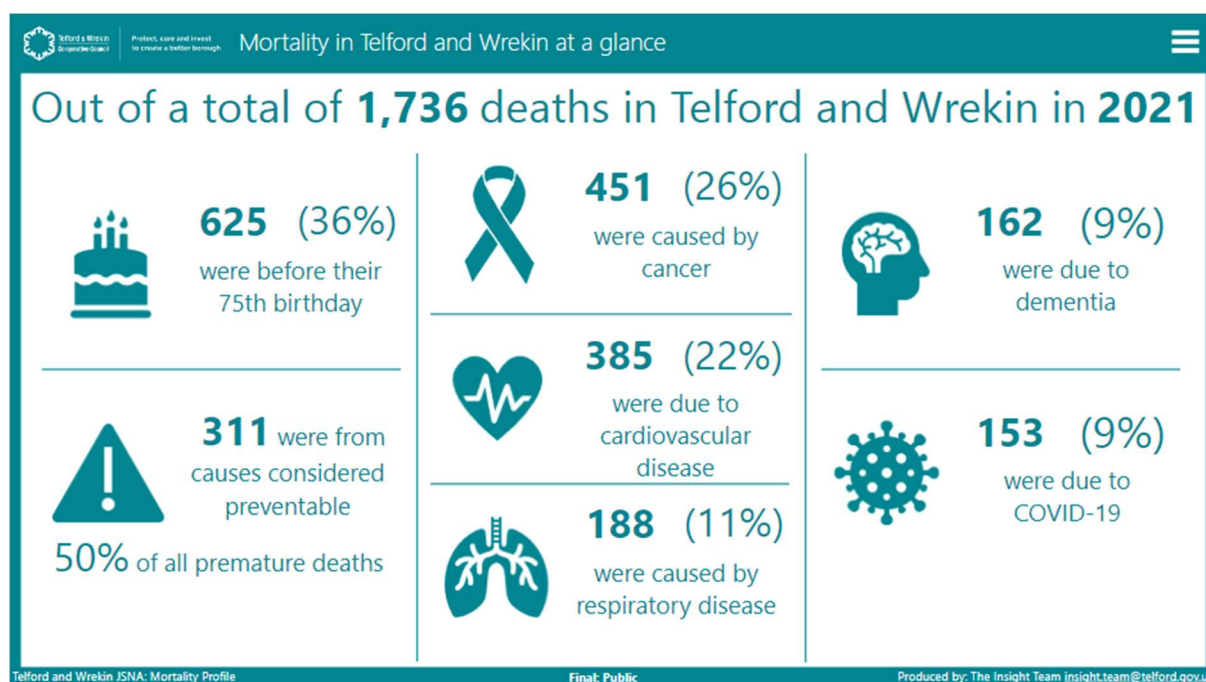
- Average life expectancy at age 65 for men in the borough was 17.8 years in 2021, compared to 18.4 years for England. Compared with women in the borough, men at 65 will live for 2.3 years fewer on average. The trend over time showed male life expectancy at 65 increasing up to 2017-19, however since that it has reduced.
- Healthy life expectancy at 65 for men was 8.7 years in 2018-20, worse than the England average (10.5) and 0.8 years fewer than women in the borough. The trend in healthy life expectancy at 65 has worsened by 1.6 years from a peak of 10.3 years in 2014-16. This has mirrored a decline in disability free life expectancy at 65 which was 9.1 years in 2018-20 similar to the England average (9.8).
- Inequality in male life expectancy was 4.0 years in 2018-20. Although this has reduced in recent years it remains 1.3 years greater than 2010-12 when it was 2.7 years.

Life expectancy at age 65 for women:

- Average life expectancy at age 65 for women in Telford and Wrekin was 20.1 years in 2021, compared to 21.0 years for England. Compared with men in the borough, women live 2.3 years longer on average at the age of 65. The trend over time showed life expectancy at 65 for women increasing year on year between 2001-03 and 2009-11 however since that point the increase has stalled.
- Healthy life expectancy for women at 65 was 9.5 years in 2018-20, worse than the England average (63.9) and 0.8 years longer than men in the borough. Healthy life expectancy at 65 in 2018-20 was 0.7 years greater than in 2013-15 but had shown a decline of 1.0 years from 2017-19. This is reflected in a decline in disability free life expectancy at 65 from 9.0 years in 2017-19 to 8.4 years in 2018-20 which was worse than the England average (9.9).
- Inequality in female life expectancy at 65 was 3.3 years in 2018-20. Although this has reduced from 4.7 years in 2016-18 it remains 2.0 years greater than its lowest point in 2011-13. (*source: PHE Fingertips 2023*)

For more information see the [‘JSNA: Population and Life Expectancy’](#) dashboard which includes more detail about the measures above and, where available, how rates vary across different communities in the borough.

Mortality



Premature Mortality

- A total of 625 people aged under 75 died in Telford and Wrekin in 2021. The rate of premature mortality from all causes in the borough in 2021 was similar to the England average for all persons, men and women. Rates of overall premature mortality were greater for men in the borough (471.7 per 100,000) than women (299.1 per 100,000)

Main Causes of Death:

- There were 1,736 deaths from all causes in Telford and Wrekin in 2021. The overall mortality rate in the borough in 2021 was worse than the England average for all persons and for women, and similar to the England average for men. The mortality rate for all causes was greater for men in the borough (1,257.5 per 100,000) than women (927.7 per 100,000)
- There were 451 deaths from all cancers in the borough in 2021, accounting for 1 in 4 deaths. The mortality rate from cancer in the borough in 2021 was similar to the England average for persons, men and women.
- Cardiovascular diseases accounted for 385 deaths (22% of all deaths) in the borough in 2021. The rate of mortality from cardiovascular disease in the borough in 2021 was similar to the England average for all persons, men and women.
- There were 188 deaths from respiratory disease in the borough in 2021, accounting for 11% of all deaths. The rate of deaths from respiratory disease in the borough in 2021 was worse than the England average for all persons and women, and similar for men.
- There were 162 deaths from dementia and Alzheimer's disease in the borough in 2021, accounting for 9% of all deaths. The rate of deaths from dementia and

Alzheimer's disease in the borough in 2021 was similar to the England average for all persons, men and women.

- There were 153 deaths due to Covid-19 in the borough in 2021. The rate of mortality due to COVID-19 was better than the England average for all persons, men and similar to the England average for women.

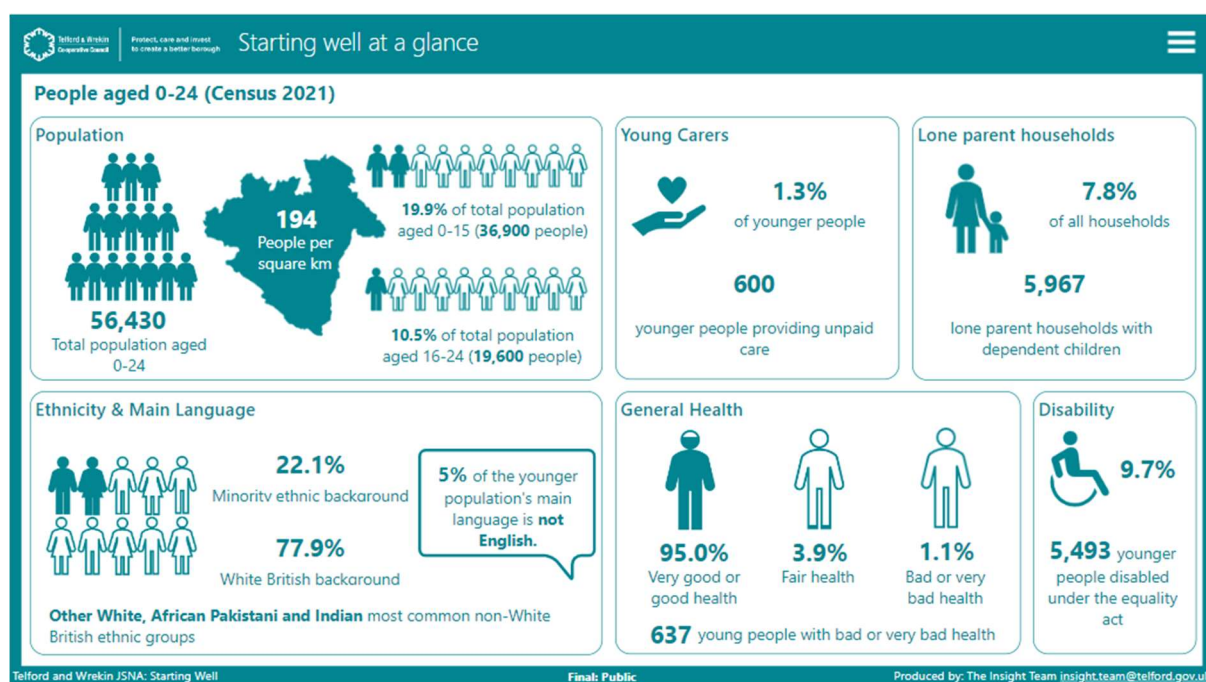
Preventable mortality

- In 2021, 311 people aged under 75 in Telford and Wrekin died from causes considered preventable. The number of preventable early deaths accounted for 50% of all premature deaths in the borough and 18% of all deaths. The rate of preventable early deaths in the borough in 2021 was similar to the England average for all persons, men and women.
- There were 75 early deaths from preventable cancer in the borough in 2021, accounting for 1 in 4 preventable early deaths. The rate of early deaths from preventable cancer in 2021 was similar to the England average for all persons, men and women.
- There were 62 deaths from preventable cardiovascular disease in the borough in 2021. The rate of preventable deaths from cardiovascular disease in 2021 was similar to the England average for all persons, men and women.

Other mortality

- There were 23 infant deaths in Telford and Wrekin between 2019 and 2021. The rate of infant mortality in the borough for 2019-21 (3.8 per 1,000) was similar to the England average (3.9 per 1,000) and was the lowest rate recorded in the last 20 years.
- There were 662 smoking attributable deaths between 2017 and 2019. The rate of smoking attributable mortality in the borough for 2017-19 (246.1 per 100,000) was worse than the England average (202.2) and the third highest in the West Midlands region.
- There were 24 deaths from drug misuse between 2018 and 2020, an increase from 16 between 2017 and 2019. The rate of deaths from drug misuse in the borough for 2018-20 (4.6 per 100,000) was similar to the England average (5.0)
- There were 53 deaths from suicide between 2019 and 2021. The suicide rate in the borough for 2019-21 (11.4 per 100,000) was similar to the England average (10.4) but was the highest rate recorded for the borough since 2012-14.
- 54 people were killed or seriously injured on the roads in Telford and Wrekin in 2021. The rate of people killed or seriously injured in the borough remains better than the England average

Starting Well



- There are around 56,430 children and young people aged 0-24 living in the borough. Around 36,900 are aged 0-15, 19.9% of the population, and 19,600 aged 16-24, 10.5% of the population (*source Census 2021*)
- More than 1 in 5 young people aged 0-24 are from a minority ethnic background (22.1%) and 5% of the younger population's main language is not English (*source Census 2021*). Ethnic diversity in the borough's population decreases by age. 23.8% of 0-15 years olds were from a minority ethnic background in 2021 compared with 5.2% of people aged 65 and over.
- Nearly 6,000 households in the borough are lone parents with dependent children, 7.8% of all households, higher than the England rate of 6.9% (*source: Census 2021*)
- Around 9.7% of children and young people aged 0-24 are disabled under the equalities act, 9.7% (*source Census 2021*)
- Infant mortality rates in the borough are similar to rates nationally (*source: PHE Fingertips 2018-20*)
- 95.0% of young people report having good or very good health, with 1.1% reporting bad or very bad health, around 637 young people (aged 0-24) (*source Census 2021*)
- Rates of obesity in pregnancy and the proportion of pregnant women who smoke at the time of delivery are worse than national rates (29.5% obesity in early pregnancy, England 22.5%, and 11.4% of mothers smoke at the time of delivery, England 8.8%) (*source PHE Fingertips, obesity 2018/19 and smoking 2022/23*)
- The 2021 rate of under 18s who conceive was worse than the England rate (T&W 19.5, England 13.1). Improvements in this rate had seen our rate become similar to that seen nationally in recent years, however recalculation of rates following the 2021

Census population estimates has resulted in our rate now being worse than national (*source: PHE Fingertips 2021*)

- Rates of overweight and obesity for children in Reception and Year 6 are worse than England rate, with T&W rates of 25.4% in reception and 38.9% in Year 6 (England 21.3% and 36.6%) (*source: PHE Fingertips 2022/23*)
- Around 27.2% of primary school and 24.1% of secondary school pupils are eligible for free school meals, higher than the England rates of 24.1% and 22.7%. The proportion of school children eligible for free school meals is increasing both locally and nationally (*source: DfE LAIT tool, 2023*).
- The proportion of children aged 2-2½ who achieved a good level of development is lower than the England average, with 63.2% achieving this standard compared to 79.3% nationally (*Source PHE Fingertips 2022/23*)
- Children in the borough perform well at primary age, achieving results that are above the national average, however there are some challenges at secondary age and for children from disadvantaged backgrounds:
 - Early Years Foundation Stage: 68.0% of children achieved a good level of development at the end of Reception, higher than the national average (67.2%) (*Source DfE LAIT Tool 2023*)
 - Phonics: 81% of children in the borough achieved a pass in Phonics, higher than the national rate of 79% (*Source DfE LAIT Tool 2023*)
 - Key Stage 1: the proportion of pupils achieving the expected standard at Key Stage 1 in the borough was above the national average for reading (T&W 71%, England 68%), and writing (T&W 63%, England 60%) and for maths (T&W 72%, England 70%) (*Source DfE LAIT Tool 2023*)
 - Key Stage 2: 61% of pupils at Key Stage 2 achieved the expected standard in reading, writing and maths, lower than the national average of 60% (*Source DfE LAIT Tool 2023*)
 - At primary school, children from disadvantaged backgrounds perform better than the national average at all Key Stages, although at all primary stages these children on average score less well than the average for the borough.
 - Key Stage 4: The proportion of pupils achieving a 9-5 pass in English and Maths, at 40.3%, is lower than the national average of 42.4%. Attainment 8 for pupils was higher than the national average (44.9 in Telford and Wrekin, 44.8 England). Progress 8 performance, at -0.30, was lower than the national rate of -0.06 (*Source DfE LAIT Tool 2023*)
 - At secondary school age, a lower proportion of children from a disadvantaged backgrounds achieve a 9-5 pass in English and Maths than the borough average (19.1% compared to 40.3%) and perform less well than their peers nationally (19.1% compared to 25.2%) (*source DfE LAIT Tool 2023*)
- The borough has higher rates of pupils with special educational needs than national, with 15.0% of pupils having SEN Support (England 13.0%). (*source: DfE LAIT Tool 2023*).
- Pupil absence rates are similar to the national average (T&W 7.8, England 7.6, however this rate is following the national trend of increasing. The rate of pupil

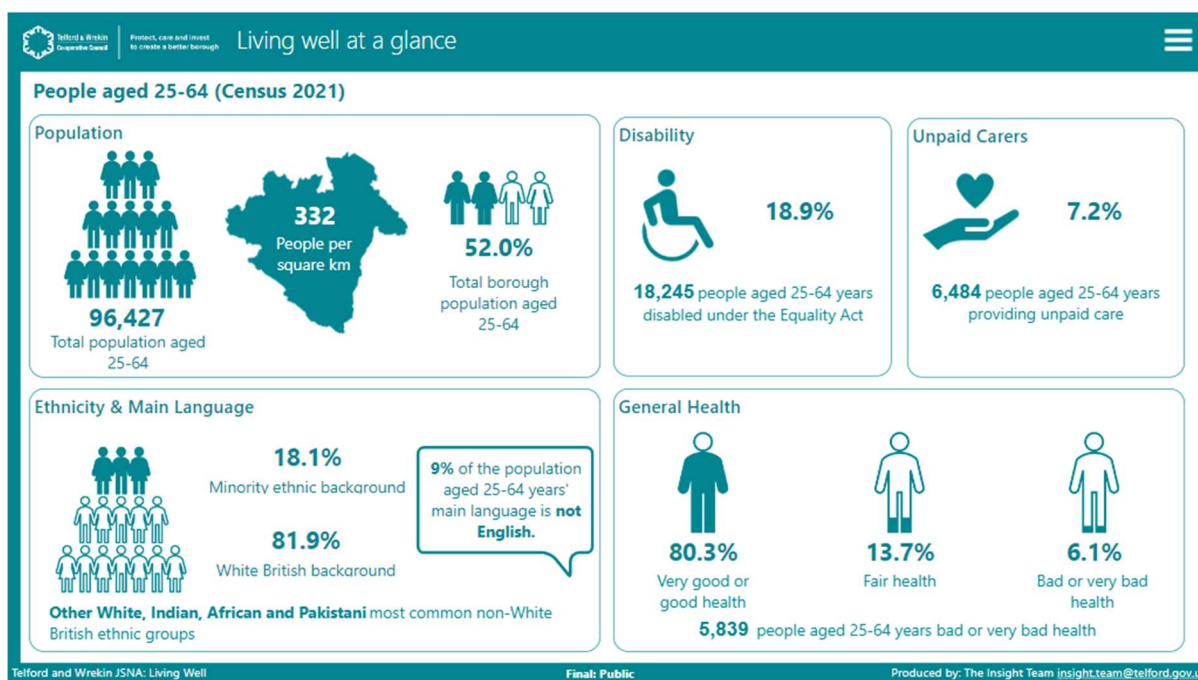
suspensions at secondary school is higher than the national average (T&W rate of 26.2 compared to England rate of 14.0) (*source DfE LAIT Tool 2021/22*)

- The proportion of young people aged 16 to 17 who are not in education, employment or training (NEET), or whose activity is not known, has improved notably in recent years and is now better than the national average (T&W 3.1, England 5.2) (*Source DfE 2022/23*)
- A lower proportion of the population at age 19 have Level 3 attainment or above, at 50.9% (England 61.5%) (*source: NOMIS 2021*).
- The borough has higher rates of children on a child protection plan (rate of 58.2 per 10,000 compared to England rate of 43.2) and of children who are looked after (rate of 107 per 10,000 compared to England rate of 71) (*source: DfE, as at 31st March 2023*)
- Around 600 children and young people (aged 0-24) reported in the 2021 Census that they provided unpaid care, 1.3% of the population. 142 (0.5%) under 16's were providing unpaid care in 2021 within the borough. 66 of these under 16's were providing 50 or more hours of unpaid care a week, 46.5% of those under 16 unproviding unpaid care (*Source: 2021 Census*)
- The rate of hospital admissions caused by unintentional and deliberate injuries per 10,000 population is similar to England for all genders and all age groups under 25 years. In all three age groups (0-4 years, 0-14 years and 15-24 years) males have a higher rate of hospital admissions than females (*source PHE Fingertips 2021/22*)

For more information see the '[JSNA: Starting Well](#)' dashboard, which includes more detail about the measures above and, where available, how rates vary across different communities in the borough.

The Insight Team can also be contacted for more detail on related Starting Well JSNA products including SEND, Early Help & Family Hubs, Community Safety.

Living Well



- The 2021 census showed that in March 2021 Telford and Wrekin had a population of 96,427 between the ages of 25 and 64 (*source: Census 2021*)
- borough's population aged 25-64 years (17,410 people) were from a minority ethnic background. The largest populations of people from a non-White British ethnic background aged 25-64 were Other White (6.1%), Indian (2.9%), African (2.2%) and Pakistani (1.7%) (*source: Census 2021*)
- 80.3% (77,369 people) of people aged 25-64 within the borough reported having very good or good health in 2021 (*source: Census 2021*)
- 18.9% (18,245 people) of residents aged 25-64 reported they had a disability in 2021.
- 7.2% of residents aged 25-64 years provided unpaid care in 2021 (*source: Census 2021*)
- 4,323 residents aged 25-64 had previously served in the UK armed forces in 2021 (*source: Census 2021*)
- 71.4% of adults in the borough were clarified as overweight or obese in 2021/22, 7.6 percentage points greater than the England average or 63.8%, ranking T&W amongst the worst 20% of all Upper Tier Local Authorities in England (*source: PHE Fingertips 2021/22*).
- In 2022, 16.7% of adults in the borough were smokers. Men were more likely than women to smoke. Compared to England, the prevalence of smoking amongst females, males and persons in the borough was similar to the England rate (*source: PHE Fingertips 2022*)
- Around 26.8% of adults are estimated to be physically inactive, worse than the national rate (22.3). the percentage of physically inactive adults in the borough was

similar to the England average between 2017/18 and 2020/21, but has risen over the last three years and is now worse than the England average (*source: PHE Fingertips 2021/22*)

- Diagnosed depression in those aged 18 and over is reported as 15.6% of the population in 2021/22, higher than the prevalence for England (12.7%). This equates to around 24,200 people (*source: PHE Fingertips depression prevalence 2021/22*).
- Self-reported wellbeing from responses to the Annual Population Survey within Telford and Wrekin were similar to England across all four indicators in 2021/22 (happiness, satisfaction, wellbeing and anxiety)
- The rate of hospital admissions for intentional self-harm per 100,000 population was similar in Telford and Wrekin to England for females, males and persons in 2021/22. The rate for females was 86.9% higher than males.
- The death rate from drug misuse in the borough, at 4.6, was similar to the England rate (5.0) (*source: PHE Fingertips 2018-20*)
- The suicide rate for the borough is similar to the national rate (2019-21 rate for all persons for Telford and Wrekin is 11.4 compared to England 10.4). the suicide rate for males was 135% higher than females.
- Admission episodes for alcohol related conditions (546.5 per 100,000) is worse than the national rate (494.0). Rates of admissions for men in the borough were almost twice that of women. (*source: PHE Fingertips 2021/22*)
- Cancer Screening and Diagnosis:
 - In 2020, 53.6% of cancers were diagnosed at stages 1 and 2. This was similar to the England average and an improvement from 2018 and 2019 when the borough rate was worse than England.
 - Breast cancer screening coverage in 2022 was 64.4%, which was worse than the England average for a second consecutive year after being better than England between 2012 and 2020 but was an improvement of 15.5 percentage points from 2021.
 - Screening coverage for cervical cancer in women aged 25-49 in 2022 (70.8%) continued to be better than the England average for the eighth consecutive year. In women aged 50-64 screening coverage was 74.7% in 2022, remaining similar to the England average as it had been since 2015. In contrast to the 25-49 age group, where there has been no significant change in screening rates in recent years, the trend for women aged 50-64 in the borough is decreasing and getting worse.
- The percentage of residents reporting a long term musculoskeletal (MSK) problem (19.5%) has been worse than England (17.6) in both 2022 and 2021.

For more information see the [‘JSNA: Living Well’](#) dashboard which includes more detail about the measures above and, where available, how rates vary across different communities in the borough.

Ageing Well



- 17.6% of the borough's population in 2021 (32,700 people) were aged 65 and over.
- 5.2% of those aged 65+ in the borough were from a minority ethnic group. Around 2% of the population aged 65+ have a main language that is not English. (*source census 2021*)
- 4,869 people aged 65+ reported they had bad or very bad health, around 14.9% of people in this age band (*source census 2021*)
- 12,790 people aged 65+ reported being disabled under the equality act, around 39.1% of the population (*source census 2021*)
- 9,047 people aged 65+ live alone, around 11.8% of households in the borough (*source census 2021*)
- 2,749 8.7% of all residents aged 65+ within the borough provide unpaid care.
- Abdominal aortic aneurism screening coverage has been better in Telford and Wrekin than England since 2016/17. At 82.1% in 2021/22 it was 11.9 percentage points higher than England.
- Bowel cancer screening coverage has been worse in Telford and Wrekin than England since 2015. At 69.4% in 2022 it was 0.9 percentage points lower than England.
- The estimated dementia diagnosis rate for people aged over 65 in the borough has been similar to the England rate since 2017. The rate has decreased over recent years from 65.9% in 2019 to 57.9% in 2023 (*source: PHE Fingertips 2023*)
- The rate of emergency hospital admissions due to falls was better in Telford and Wrekin than England for 2021/22 for males, females and persons aged 65+ and 80+. The rate was also better for males and persons aged 65-79 years; however, it was similar to England for females 65-79 years.

- The latest data for vaccination coverage for PPV and Shingles in the borough was worse than England. In 2022/23 the flu vaccination coverage for those 65+ was worse than England at 78.3% and for those at risk under 65 years was worse than England at 47.8%
- Levels of winter mortality in 2020-21 were similar in the borough to England for all ages and those aged over 85 years for males, females and persons.
- The percentage of adult social care users and carers who have as much social contact as they would like was similar in the borough to England in 2021/22

For more information see the '[JSNA: Ageing Well](#)' dashboard which includes more detail about the measures above and, where available, how rates vary across different communities in the borough.

Version Control

Version Number	Purpose/Change	Author	Date
1.0	Initial draft	HP/DC	31/01/2024