

Primary Engineer Programmes

...the first step®



IF YOU WERE AN ENGINEER WHAT WOULD YOU DO?®

Ever wondered if you could design something to make the world a better place?

Each year, the 'If you were an engineer, what would you do?®' competition asks pupils between the ages of 3-19 years from across the UK to come up with ideas for engineering inventions that could change the world.



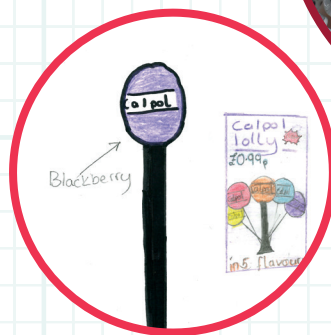
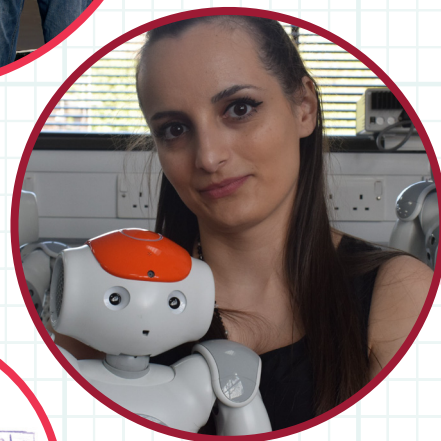
ABOUT THE COMPETITION

All entries are graded by engineers, with winning and shortlisted pupil designs displayed at public exhibitions up and down the country. If selected as an award winner they could even get their invention made into a working prototype!

The aim of the competition is to inspire you and your pupils to open their minds to what engineering is all about and engage with engineering professionals through online interviews and school visits.

Please turn over the flyer for your 'step-by-step' guide.

Find out more about the competition on the website:
www.leadersaward.com



SCAN TO FIND OUT MORE ABOUT THE 'IF YOU WERE AN ENGINEER, WHAT WOULD YOU DO?' PODCAST

ENGINEERS IN THE MAKING



@LEADERSAWARD

#IFYOUWEREANENGINEERWHATWOULDYOUDO?

WWW.LEADERSAWARD.COM



IF YOU WERE AN ENGINEER WHAT WOULD YOU DO?®

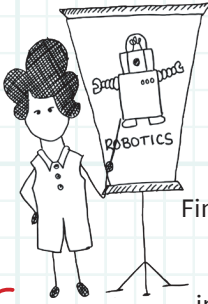


1.

Register your school for the competition:

WWW.LEADERSAWARD.COM

2.



Find an engineer to come to your school to discuss engineering and to be interviewed by pupils or ...



...Join us online to meet and interview engineers from across different industries. See our library of interviews on our YouTube Channel

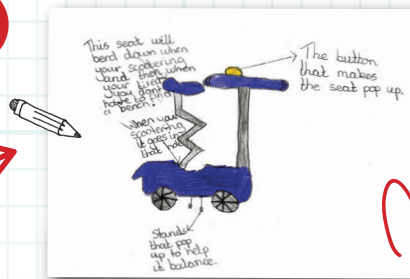
WWW.YOUTUBE.COM/USER/PRIMARYENGINEER

3.



Pupils each identify a problem that affects them, their family, their neighbourhood or the whole world

4.



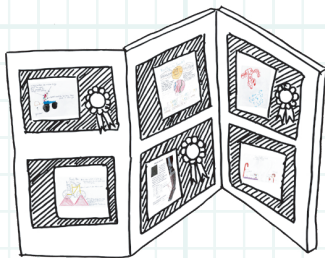
Pupils illustrate and annotate their design. They must also provide a letter to persuade engineers to build their design.

5.

SEND ENTRIES TO:
LEADERS AWARD FLOOR 2
AMS OFFICE TOWER,
AMS TECHNOLOGY PARK,
BILLINGTON ROAD,
BURNLEY
BB11 5UB



7.



Winners are selected and entries are shortlisted for exhibitions.

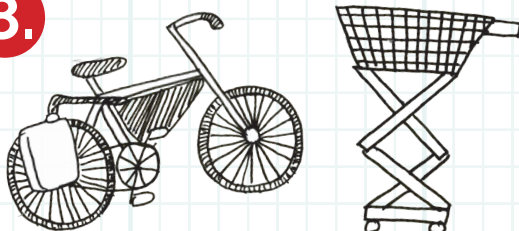
PASS
MERIT
DISTINCTION

6.



All entries are then marked by engineers and are graded pass, merit or distinction

8.



University partners will select a design to build.

IF YOUR SCHOOL WOULD LIKE TO TAKE PART IN THIS EXTRAORDINARY COMPETITION PLEASE CONTACT:
INFO@LEADERSAWARD.COM
FOR MORE INFORMATION VISIT WWW.LEADERSAWARD.COM



@LEADERSAWARD

#IFYOUWEREANENGINEERWHATWOULDYOUDO?