



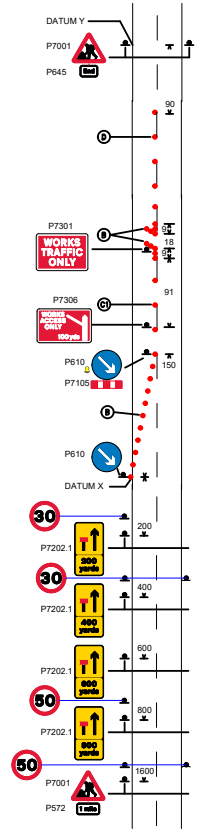
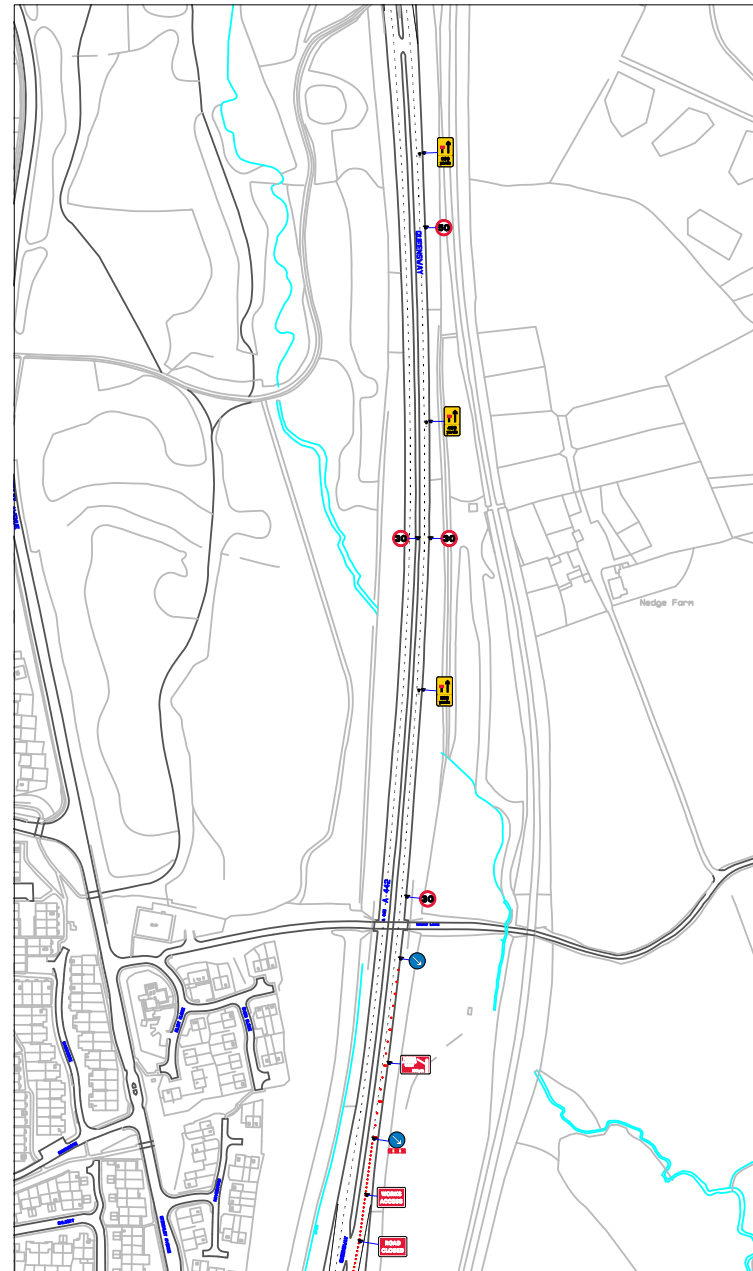
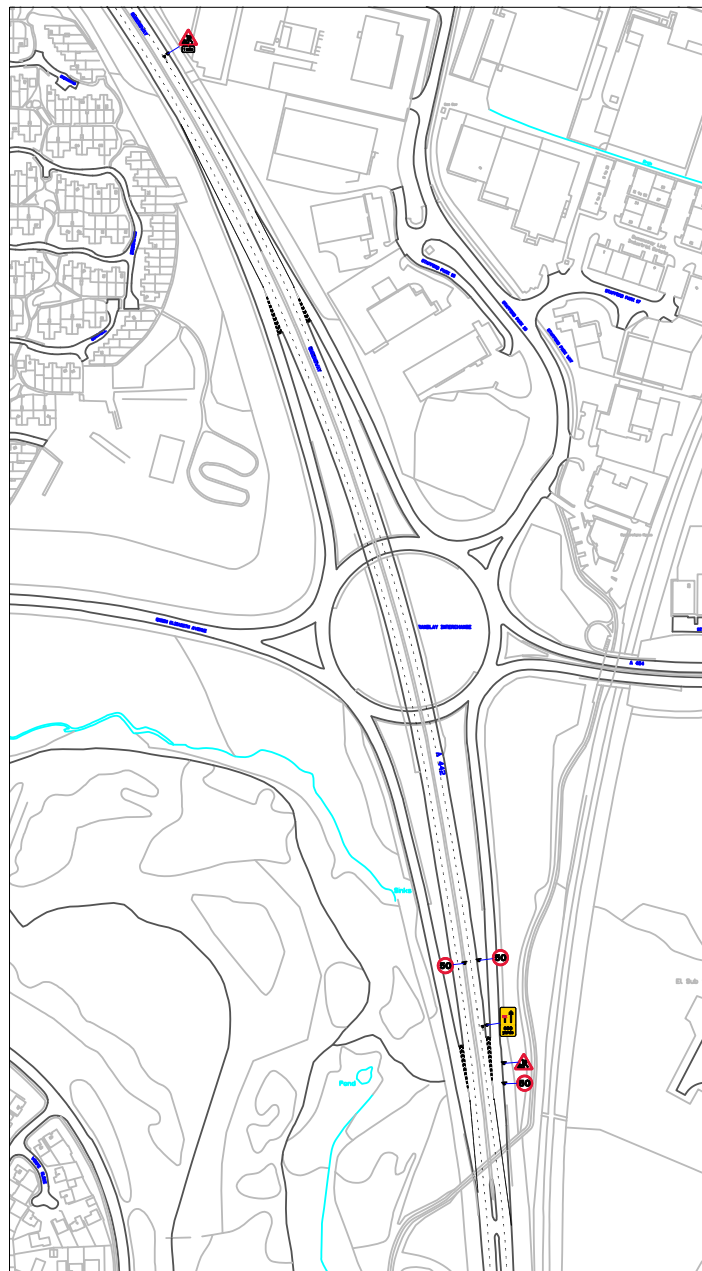
**DETAIL B**  
 1500mm minimum clearance for cones, warning lights, traffic signs and cones. Minimum clearance for cones, warning lights, traffic signs and cones. Minimum clearance for cones, warning lights, traffic signs and cones. Minimum clearance for cones, warning lights, traffic signs and cones.

**DETAIL C1**  
 1500mm minimum clearance for cones, warning lights, traffic signs and cones. Minimum clearance for cones, warning lights, traffic signs and cones. Minimum clearance for cones, warning lights, traffic signs and cones. Minimum clearance for cones, warning lights, traffic signs and cones.

**DETAIL C2**  
 1500mm minimum clearance for cones, warning lights, traffic signs and cones. Minimum clearance for cones, warning lights, traffic signs and cones. Minimum clearance for cones, warning lights, traffic signs and cones. Minimum clearance for cones, warning lights, traffic signs and cones.

**DETAIL D**  
 1500mm minimum clearance for cones, warning lights, traffic signs and cones. Minimum clearance for cones, warning lights, traffic signs and cones. Minimum clearance for cones, warning lights, traffic signs and cones. Minimum clearance for cones, warning lights, traffic signs and cones.

**DETAIL E**  
 1500mm minimum clearance for cones, warning lights, traffic signs and cones. Minimum clearance for cones, warning lights, traffic signs and cones. Minimum clearance for cones, warning lights, traffic signs and cones. Minimum clearance for cones, warning lights, traffic signs and cones.



### Traffic Management

This drawing has been produced for a specific client & project identified below and is not intended for use by any other person or for any other purpose.

**NOTES**

- All signs as per Chapter 8. Distances between cones to be 5m maximum unless otherwise noted.
- Distances between signs NOT to scale for purpose of clarity.
- All sign placement subject to available safe working space.
- The purpose of the Traffic Management Plan is for it to be used only as a guide and all traffic management equipment should be put out according to the 'Safety at Street Works and Road Works - Code of Practice', i.e. Red Book & the 'Traffic Signs Manual Chapter 8', i.e. 'Yellow Book'.

**Key**

- Sign position and aspect of vision
- Position of signal head
- Cones
- No Parking Cones
- WORK AREA
- WORK AREA NEEDS SWITCHING
- ROAD CLOSURE
- Diversion Route 2
- Stop & Go System
- PERMANENT TRAFFIC SIGNAL
- PERMANENT PEDESTRIAN SIGNAL

**THIS DRAWING MUST BE PRINTED IN COLOUR  
 ALL SIGNAGE TO BE IN WELSH AND ENGLISH**

NTS @ A3  
 NTS - OTHER SIZES  
**DO NOT SCALE FROM THIS DRAWING -  
 All Dimensions to be verified on site.**

REV	DATE	DESCRIPTION

**TRAFFIC MANAGEMENT PLAN**

**Client:**

**Drawing Number:** QTM-236-01

**Drawing Title:**  
 VRS 11  
 A442  
 STIRCHLEY INTERCHANGE  
 TELFORD  
 TF3 2DE  
 SOUTHBOUND LANE 1 CLOSURE

Design:	Technol Officer:	REV
Name: C. DE-COURCY MASH		
Signature:		A
Date: 29/03/2021		