

Borough of Telford & Wrekin

The Council proposes to make the Borough of Telford & Wrekin Beveley Roundabout Scheme (Temporary Prohibition of Traffic) Order 2020 under the Road Traffic Regulation Act 1984, in order to undertake resurfacing works. The order becomes operational from the 1/9/2020 between the hours of 19.00pm and 06.00am. The following Rds are affected: Beveley Roundabout in its entirety; Wombridge Way from its jcn with Beveley Rbt and its jcn with Hadley Rd to Wombridge Way; Holyhead Rd (East of Beveley Rbt) from its jcn with Beveley Rbt to its jcn with Vicar Str; Holyhead Rd (west of Beveley Rbt) from its jcn with Beveley Rbt for approx. 90m in a westerly direction; Mossey Green Way from its jcn with Beveley Rbt to its jcn with Shepherds Lane; Shepherds Lane from its jcn with Mossey Green to its jcn with Mossey Green Way; Sunnyside Rd from its jcn with Holyhead Rd to its jcn with Shrubbery Rd; Hartsbridge Rd from its jcn with Holyhead Rd to its jcn with Hartshill. Alternative routes will be signed on site. The maximum duration is 18 months, but the works are expected to be completed by the 11/9/2020. Anthea Lowe, Director: Governance
Temporary Road Closure Notice TC3-0328 22/8/2020
Anthea Lowe, Associate Director: Policy & Governance. Temporary Road Closure Notice TCx-xxx x/x/2020

Please find attached information that outlines the traffic management arrangements for the temporary road closures for the Beveley Roundabout Scheme.

Balfour Beatty on behalf of Telford & Wrekin Council are planning to undertake resurfacing works. The work is set to commence on Tuesday 1st September 2020 and will last for a duration of 10 nights between the hours of 19.00pm and 06.00am with an end date of Friday 11th September 2020.

The diversion routes for vehicular traffic travelling in all directions will be signed on site. Please see diversion routes attached.

Included in the road closures are :-

Beveley Roundabout; Wombridge Way; Holyhead Road; Mossey Green Way; Shepherds Lane; Hartshill; Quarry Lane; Sunnyside Road; Hartsbridge Road

The works will be carried out in 3 phases:-

Phase 1 – 1st September to 4th September – Southern half of roundabout

Mossey Green Way closed from Shepherd's Lane junction

Wombridge Way closed from Hadley Road junction

Shepherd's Lane closed onto Mossey Green Way

B5061 Holyhead Road (East of roundabout) closed from Vicar Street junction

B5061 Holyhead Road (West of roundabout) closed from Shell Garage to Beveley Roundabout

Quarry Lane closed onto Mossey Green Way

2 way traffic lights on B5061 Holyhead Road (West) & Hartshill

Phase 2 dates Monday 7th Sept – Wednesday 9th September

Mossey Green Way closed from Shepherd's Lane junction

Quarry Lane closed onto Mossey Green Way

Wombridge Way closed from Hadley Road junction

Hartshill Closed

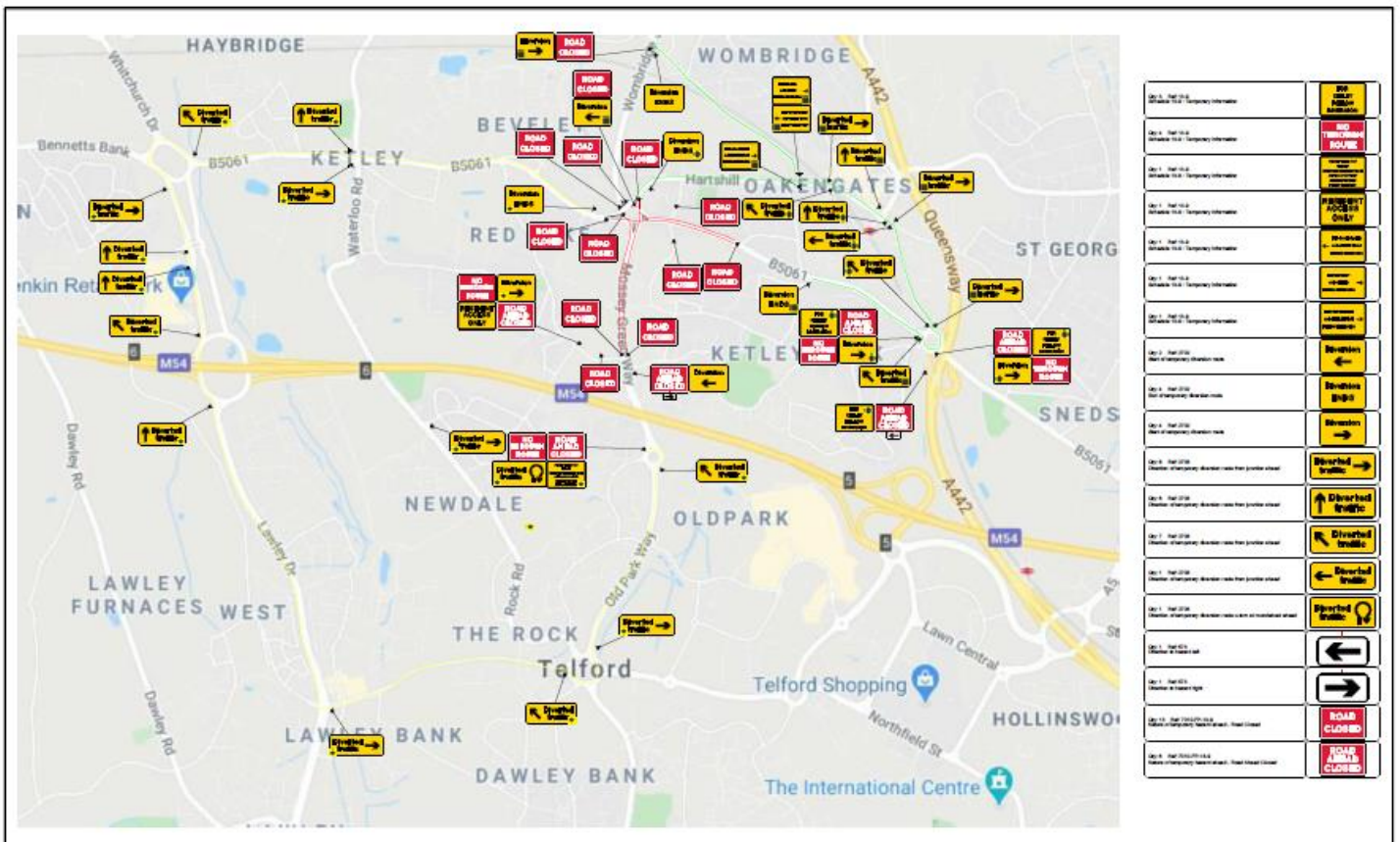
2 way traffic lights on B5061 Holyhead Road both directions

Phase 3 – Road markings and gully emptying works (switching from Phase 1 to 2)

On 10th September the phases will be switched to allow road marking and gully emptying works on both phases. We anticipate Phase 2 will be in place from 19:00 – 23:00 and Phase 1 will be in place from 23:00 – 03:00 approximately.

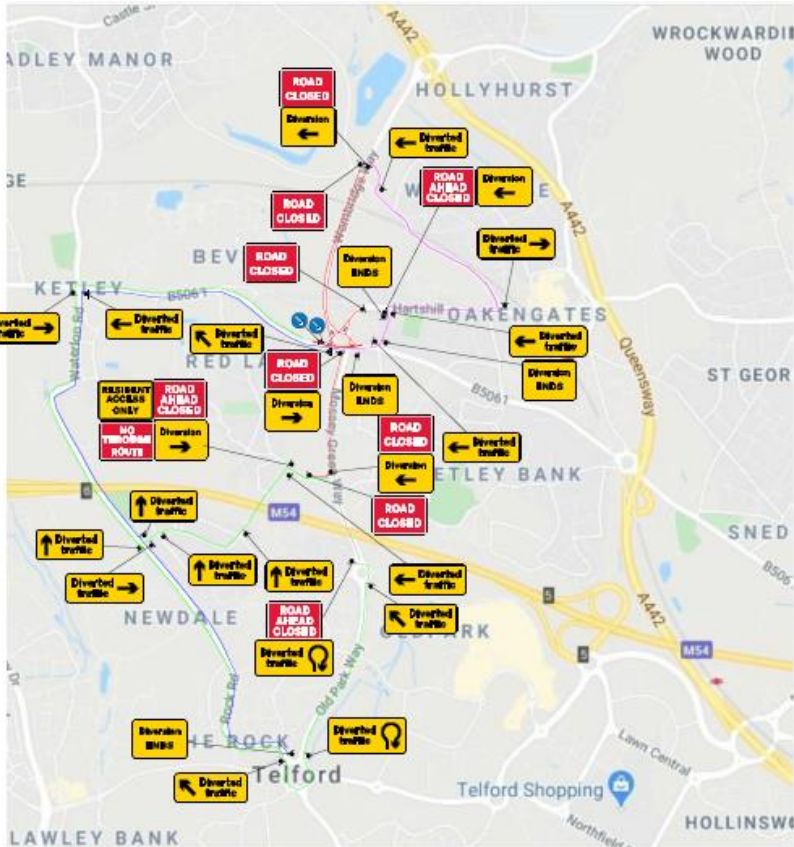
For any further information, questions or queries relating to this scheme please contact :

TelfordHighwaysHub@balfourbeatty.com



201.1 - 201.21.1	201.1 - 201.21.1	201.1 - 201.21.1
201.1 - 201.21.2	201.1 - 201.21.2	201.1 - 201.21.2
201.1 - 201.21.3	201.1 - 201.21.3	201.1 - 201.21.3
201.1 - 201.21.4	201.1 - 201.21.4	201.1 - 201.21.4
201.1 - 201.21.5	201.1 - 201.21.5	201.1 - 201.21.5
201.1 - 201.21.6	201.1 - 201.21.6	201.1 - 201.21.6
201.1 - 201.21.7	201.1 - 201.21.7	201.1 - 201.21.7
201.1 - 201.21.8	201.1 - 201.21.8	201.1 - 201.21.8
201.1 - 201.21.9	201.1 - 201.21.9	201.1 - 201.21.9
201.1 - 201.21.10	201.1 - 201.21.10	201.1 - 201.21.10
201.1 - 201.21.11	201.1 - 201.21.11	201.1 - 201.21.11
201.1 - 201.21.12	201.1 - 201.21.12	201.1 - 201.21.12
201.1 - 201.21.13	201.1 - 201.21.13	201.1 - 201.21.13
201.1 - 201.21.14	201.1 - 201.21.14	201.1 - 201.21.14
201.1 - 201.21.15	201.1 - 201.21.15	201.1 - 201.21.15
201.1 - 201.21.16	201.1 - 201.21.16	201.1 - 201.21.16
201.1 - 201.21.17	201.1 - 201.21.17	201.1 - 201.21.17
201.1 - 201.21.18	201.1 - 201.21.18	201.1 - 201.21.18
201.1 - 201.21.19	201.1 - 201.21.19	201.1 - 201.21.19
201.1 - 201.21.20	201.1 - 201.21.20	201.1 - 201.21.20
201.1 - 201.21.21	201.1 - 201.21.21	201.1 - 201.21.21
201.1 - 201.21.22	201.1 - 201.21.22	201.1 - 201.21.22
201.1 - 201.21.23	201.1 - 201.21.23	201.1 - 201.21.23
201.1 - 201.21.24	201.1 - 201.21.24	201.1 - 201.21.24
201.1 - 201.21.25	201.1 - 201.21.25	201.1 - 201.21.25
201.1 - 201.21.26	201.1 - 201.21.26	201.1 - 201.21.26
201.1 - 201.21.27	201.1 - 201.21.27	201.1 - 201.21.27
201.1 - 201.21.28	201.1 - 201.21.28	201.1 - 201.21.28
201.1 - 201.21.29	201.1 - 201.21.29	201.1 - 201.21.29
201.1 - 201.21.30	201.1 - 201.21.30	201.1 - 201.21.30

Quantum Traffic Management www.quantumtm.co.uk +44 (0) 01978280144	Dm: DB Chk: AS App: Date: 21/07/20							Drawing: Traffic management arrangement for Road Closure and Diversion	Drawing No: QTM-DB-BB-210a CONE-XXXXX Scale: N.T.S
	Project: Beveley Roundabout TF1 5YB PH1		Rev: Dm: Chk: App: Description: Date:						



Qty: 1 Ref: 13-9 Schedule 13-9 - Temporary Information	
Qty: 1 Ref: 13-9 Schedule 13-9 - Temporary Information	
Qty: 4 Ref: 2702 End of temporary diversion route	
Qty: 2 Ref: 2702 Start of temporary diversion route	
Qty: 3 Ref: 2702 Start of temporary diversion route	
Qty: 3 Ref: 2703 Direction of temporary diversion route from junction ahead	
Qty: 5 Ref: 2703 Direction of temporary diversion route from junction ahead	
Qty: 4 Ref: 2703 Direction of temporary diversion route from junction ahead	
Qty: 3 Ref: 2703 Direction of temporary diversion route from junction ahead	
Qty: 2 Ref: 2703 Direction of temporary diversion route (warn at roundabout ahead)	
Qty: 2 Ref: 610 Keep right	
Qty: 6 Ref: 7010-PT-13-9 Nature of temporary hazard ahead - Road Closed	
Qty: 3 Ref: 7010-PT-13-9 Nature of temporary hazard ahead - Road Ahead Closed	

Quantum Traffic Management www.quantumtm.co.uk +44 (0) 01978280144	Dm: DB Chk: AS App: Date: 21/07/20	 Project: Beveley Roundabout TF1 5YB PH2	Rev	Dm:	Chk	App	Description	Date	Drawing: Traffic management arrangement for Road Closure and Diversion Drawing No: QTM-DB-BB-211a CONE-XXXXX Scale: N.T.S
	Quantum Traffic Management www.quantumtm.co.uk +44 (0) 01978280144		Dm: DB Chk: AS App: Date: 21/07/20	 Project: Beveley Roundabout TF1 5YB PH2	Rev	Dm:	Chk	App	