

Walking/Cycling in Telford

Be safe when walking and cycling

- Wear a cycle helmet.
- Be bright, be seen. Wear fluorescent/reflective clothing.
- Always use lights when cycling at night.
- Plan your route and let someone know where you're going.
- Ensure your bike is in good condition and safe to ride.
- Be skilled on your bike and have cycle training.
- Listening to music/using mobiles whilst riding seriously impairs your ability to ride safely.
- Know the rules of the road.

For information about cycle coaching and route planning go to www.telford.gov.uk/cyclingandwalking

This map is accurate to the best of our knowledge. If any anomalies are found, please contact Telford & Wrekin Council on 01952 364000

Key abbreviations

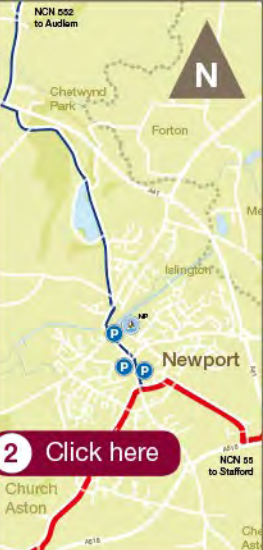
- Leisure centres:**
 AD Abraham Darby Sports and Leisure Centre
 HV Horseshay Village Golf Centre
 IR Telford Ice Park
 NP Newport Swimming Pool
 OL Oakengates Leisure Centre and Telford Tennis Centre
 PS Phoenix Sports Centre
 SB Telford Snowboard & Ski Centre
 SR Stirchley Recreation Centre
 WC Wellington Civic and Leisure Centre
- Museums:**
 AP Attingham Park, NT
 BA Bulldogs Abbey
 BE Benthal Hall, NT
 BF Bedford Furnace
 BH Blith Hill
 CC Coalport China Museum and Tar Tunnel
 CH Attingham Park Estate, Cronkhill, NT
 CM Royal Air Force Museum Cosford
 DH Dale House
 EN Engruity
 IB Iron Bridge and Tolhouse
 JM Jackfield Tea Museum
 LA Lilleshall Abbey
 MG Museum of The Gorge
 MI Coalbrookdale Museum of Iron
 ML Museum Library and Ironbridge Institute
 MW Much Wenlock Priory
 OF Old Furnace
 PW Broseley Clay Tobacco Pipe Works
 RH Rosahill House

Key routes and zones

- Routes:**
 Footpath
 Railway
 Ironbridge Way Walking Route
 Local Cycle Route
 NCN 45
 NCN 55
 NCN 81
 NCN 552 (Formerly Regional Route 75)
 Shropshire Way Walking Route
 Silk In Way
 Strategic cycle route
- Zones:**
 Industrial park
 Ironbridge World Heritage Site
 Southwater
 Telford Town Centre
 Telford Town Park

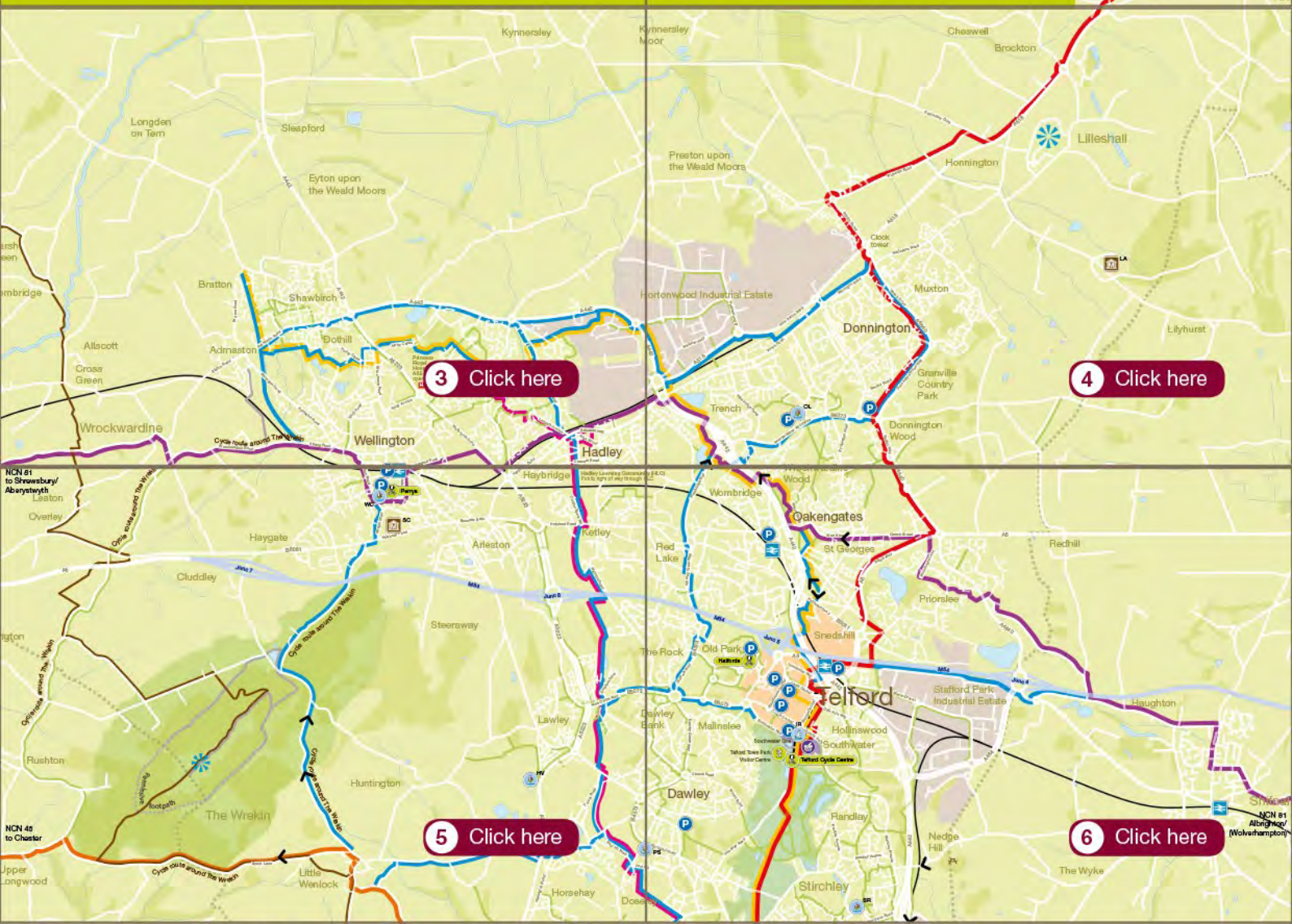
Key icons

- Sites of interest:**
 Bike parking
 Bike shop (some offer hire, see list)
 BMX Track
 Bus station
 Leisure centre
 Museum
 Rail Station
 Southwater
 Telford Town Park Visitor Centre
 Telford Ice Park
- Other symbols:**
 Viewpoint
 Steep gradient (downhill)



1 Click here
Telford Cycle Centre

2 Click here



3 Click here

4 Click here

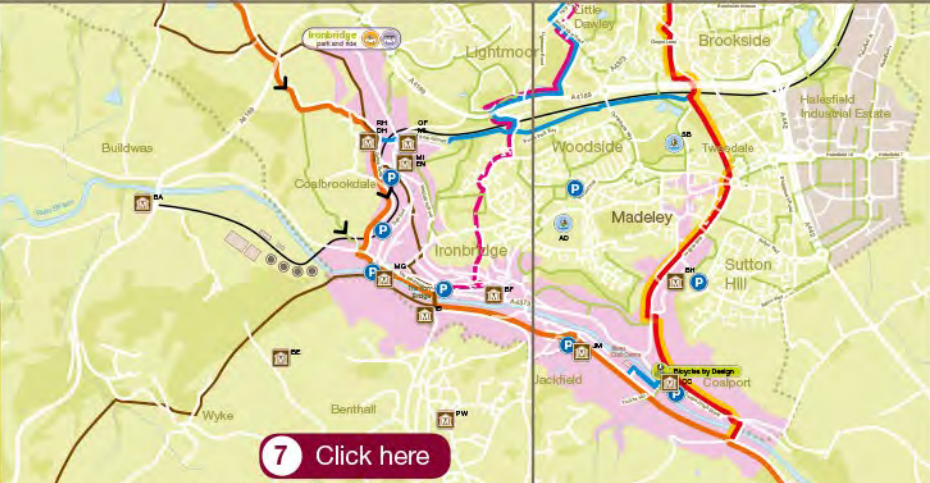
5 Click here

6 Click here

TravelTelford

Cycling map of Telford and Wrekin

Walking routes included in this issue



7 Click here

Telford Town Park Visitor Centre
 Hinksey Road, Telford Town Park, Telford TF3 4EP
 01952 382340
www.telfordtownpark.co.uk

8 Click here



Hawkstone Park and Follies
 Historic woods and monuments, tea room and parking.
www.hawkstoneparkfolies.co.uk



Hooton Hall & Gardens
 Hall, gardens, restaurant and parking.
www.hootonhallgardens.org



Shropshire Union Canal
 Historic canal. Day boat hire available from Hareby Junction on the Shropshire/Staffordshire border.

9 Click here

10 Click here



Haughmond Abbey
 English Heritage. Abbey ruins, gardens, cafe, shop and parking.
www.english-heritage.org.uk/abbeys/haughmond-abbey

11 Click here

12 Click here



Sunnycroft
 National Trust. Edwardian villa, cafe and parking.
www.nationaltrust.org.uk/sunnycroft



Lilleshall Abbey
 Abbey ruins.
www.english-heritage.org.uk/layout/proseid/lilleshall-abbey



Attingham Park
 National Trust. Manor house, walled garden, deer park, cafe, shop and parking.
www.nationaltrust.org.uk/attingham-park

13 Click here

14 Click here



Ironbridge World Heritage Site
 The historic iron bridge, museum, cafe, restaurant, shops and parking. No admission charge for the bridge, admission charges apply for some buildings.



Telford Snowboard & Ski Centre
 City ski slope. Ski lessons available.
www.telford-snowboard-ski.com



Acton Burnell
 English Heritage. Tower house ruins.
www.english-heritage.org.uk/properties/acton-burnell-castle



Wenlock Priory
 English Heritage. Priory ruins, shop, gardens and parking.
www.english-heritage.org.uk/properties/wenlock-priory



Dudmaston Estate
 National Trust. Historic estate, shop, gardens and parking.
www.nationaltrust.org.uk/dudmaston-estate

15 Click here

16 Click here

Key

Cycle routes:

- Ironbridge Way Walking Route
- NCN 45
- NCN 45 Permissive path
- NCN 55
- NCN 81
- NCN 552 (Formerly Regional Route 75)
- Silkyn Way
- Shropshire Way Walking Route

Sites of interest:

- Museum
- Leisure centre
- Telford Ice Rink
- National Trust property
- English Heritage property
- Railway station (Railway)
- Southwater

Walking and cycling map of Telford and Wrekin Issue 2
 © Crown copyright and database rights 2015
 Ordnance Survey 100019694

